

ABOVE THE TREELINE

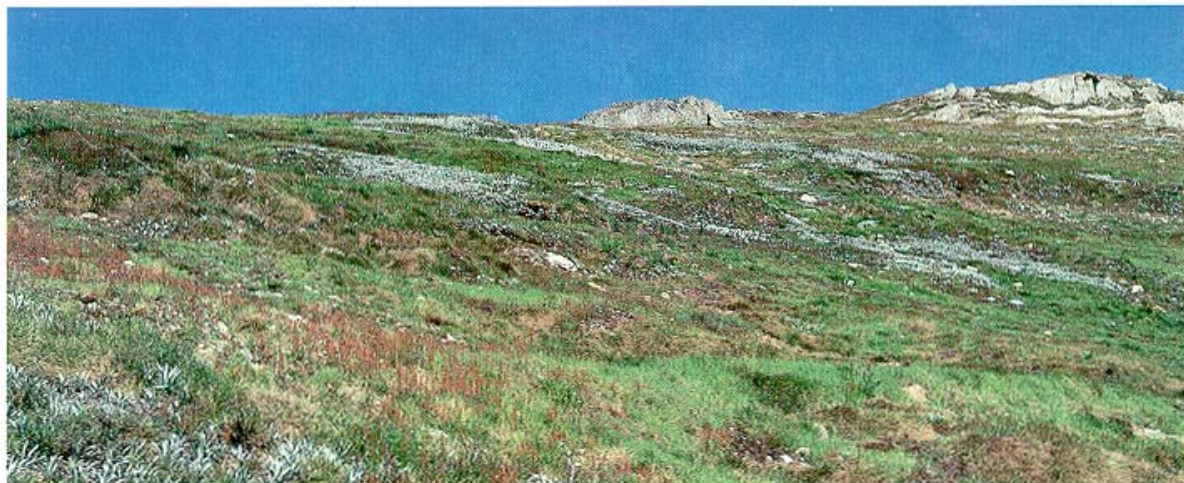


Erosion in the alpine area is now caused by people. Multiple paths are created by walkers.



Tracks such as the Charlotte's Pass walkway require annual maintenance by the National Parks and Wildlife Service. The weight of snow on the raised walkways causes them to bend or break under pressure.

A QUIET ACHIEVEMENT



Soil Conservation Service personnel working on the badly eroded slopes of Carruthers Peak in 1957. The same area 25 years later illustrates the successful recolonisation with native species such as snow daisy and snow grass.

Over the years the absence of grazing, combined with the Soil Conservation Service's program, has allowed many areas to approach their natural state. Natives such as montia (*Neopaxia* species), mountain celery (*Aciphylla* species) and ribbon grass (*Chionochloa*

species) are starting to reappear in treated and or ungrazed areas. Runoff has decreased and creeks are no longer clogged and clouded with sediment. It is a tremendous achievement, considering the difficulties of access, the expense of reclaiming damaged areas, the

ABOVE THE TREELINE

labour intensive work and the extreme climate.

Although burning and grazing no longer threaten the Kosciusko alpine area, new problems are emerging associated with the increasing number of visitors to the region. In alpine areas erosion along walking trails and paths is a major problem. In sub-alpine areas there is an increasing demand for parking, accommodation and ski facilities. Erosion is now a result of human rather than grazing activities. The Soil Conservation Service, in association with the National Parks and Wildlife Service, continues to monitor and maintain soil conservation works in the summit area. In sub-alpine areas it is actively involved in revegetating road batters and construction sites.

The Kosciusko-Snowy Mountains area is a unique and valuable resource that still requires careful management. It is an environment that contains conflicting land uses which must be accommodated while still maintaining the



The Blue Lake walking trail.

natural vegetation cover and good water quality. The Soil Conservation Service provides soil conservation advice and assistance to all people and organizations who seek to use or develop part of this fragile area of New South Wales.



The alpine regions are a unique and valuable resource that should be managed for the benefit of current and future generations of Australians (Photo: C. Lotterdell).



**SOIL
CONSERVATION
SERVICE
NEW SOUTH WALES
1986**

Written and prepared by F. Irwin
with assistance from J. Rogers.
Issued under the authority of the
Hon J.R. Hallam, M.L.C.,
Minister for Agriculture and Fisheries.

ISBN 0 7241 3984 2

PRINTED
IN AUSTRALIA
© 1986 GOVERNMENT PRINTING OFFICE